

Zmetrix Impedance Test System ST300

Advanced performance ...
within your reach



- New scanning TDR technology
- Calibrated to national standards
- Accurate over a wide range of measurement
- Powered by a high speed USB connection
- Single and Differential measurements
- Data collection and display software
- Statistical reporting of results
- Affordable price



Making your controlled impedance measurements affordable

Zmetrix.com

The Zmetrix ST300 Impedance Test System...

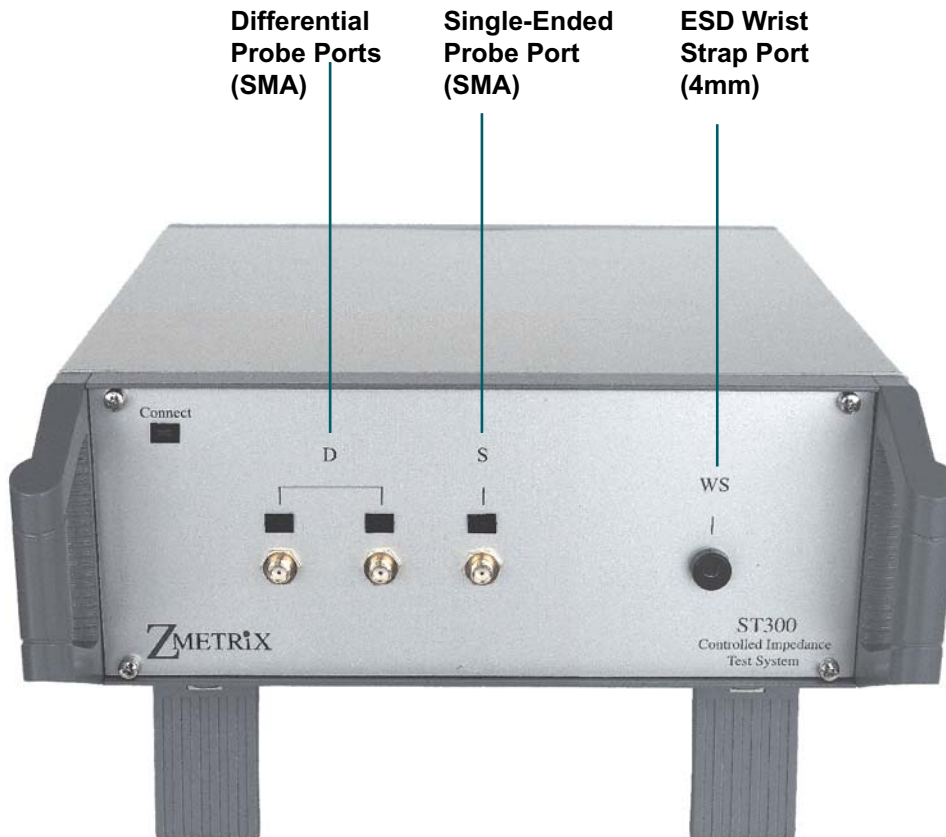
A new breed of TDR, using scanning technology to make controlled impedance measurements more affordable. The Zmetrix ST300 impedance test system extends controlled impedance measurements to a wider spectrum of PCB manufacturers.

Performance and quality you expect at a price you can afford

The Zmetrix ST300 Impedance test system brings accurate and repeatable impedance measurements to the pcb market at a price that is a fraction of the competition. The ST300 has a 1% measurement accuracy, calibrated to 25, 50, 75, and 100 ohm reference airlines traceable to national standards.

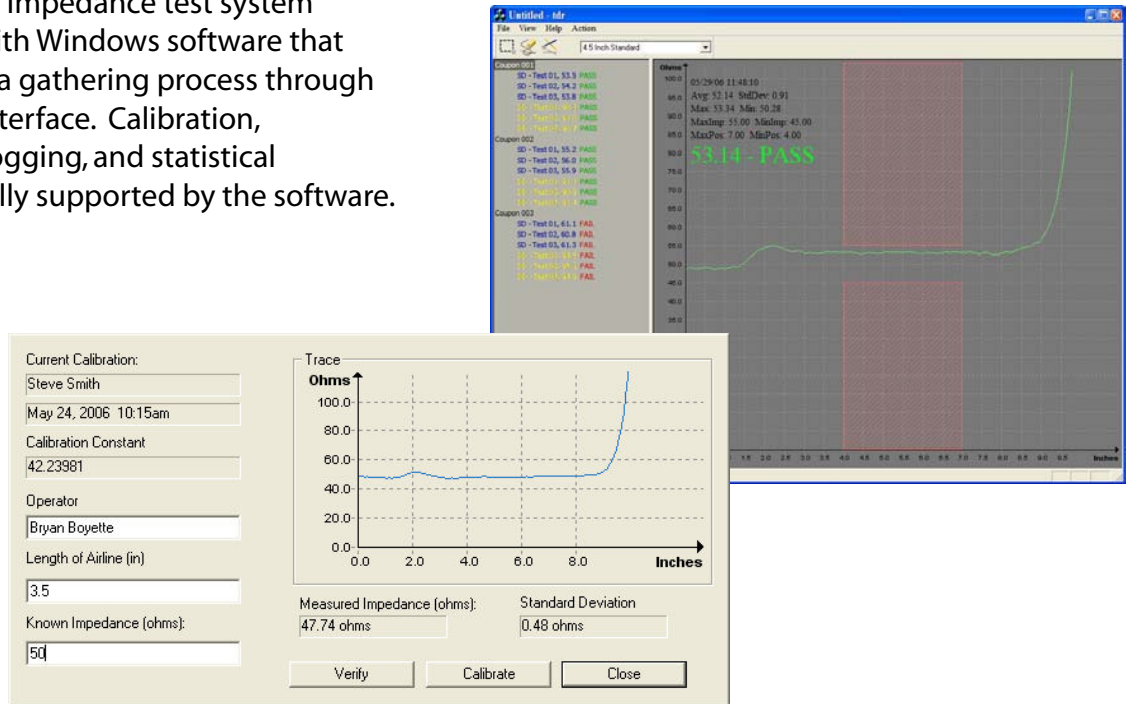
Simple and easy to use right out of the box

Simply plug the cables in, and start the software. The user interface will guide you through taking a single measurement, or gathering data on a batch of coupons. The ST300 makes it easy from start to finish. Anyone can take good measurements, from your newest operator to your most experienced technician



ST300 Measurement Software

The Zmetrix ST300 impedance test system comes standard with Windows software that automates the data gathering process through an intuitive user interface. Calibration, verification, data logging, and statistical reporting are all fully supported by the software.



Standard Accessories

The Zmetrix ST300 ships with all the accessories you will need to begin taking production measurements. From foot pedal to semi-rigid standards, the accessories you need are included in the purchase price.



ACST-211
50 Ohm Semi-Rigid Standard



ACST-300
USB Footswitch

Specifications

Range	0 - 150 Ohms
Accuracy	1% at 50 Ohms
Impedance Resolution	0.03 Ohms
Lineal Resolution	75 points/inch (.013")
Calibration	25, 50, 75, and 100 Ohm Airlines Traceable to national standards

Inputs

High-speed USB peripheral port
Test probe channels - 3 (SMA)
Anti-static wrist strap cord connection - 4mm

Standard Accessories

50 ohm probe	ACCST-601
100 ohm differential probe	ACCST-602
50 ohm semi-rigid standard	ACCST-211
SMA Cable - 3 ft. (qty -3)	CBL100
USB Peripheral Cable - 3 ft.	CBL101
USB Footswitch	ACCST-300
ST100 Instruction Manual	IMCST100
Anti-static wrist strap & cable	ACCST-301

Optional Accessories

25 ohm semi-rigid standard	ACCST-200
50 ohm semi-rigid standard	ACCST-211
75 ohm semi-rigid standard	ACCST-221
100 ohm semi-rigid standard	ACCST-231
SMA Torque Wrench	ACCST-310