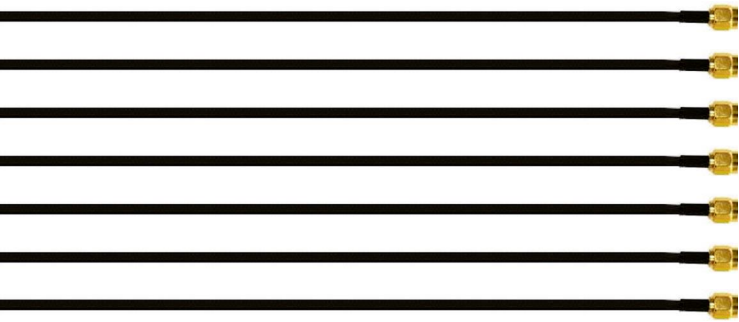


Zmetrix Impedance Test System ST600

Advanced performance ...
within your reach



- Scanning Technology
- Calibrated to national standards
- Accurate over a wide range of measurement
- Powered by a high speed USB connection
- Single and Differential measurements
- Data collection and display software
- Statistical reporting of results
- Affordable price



Making your controlled impedance measurements affordable

Zmetrix.com

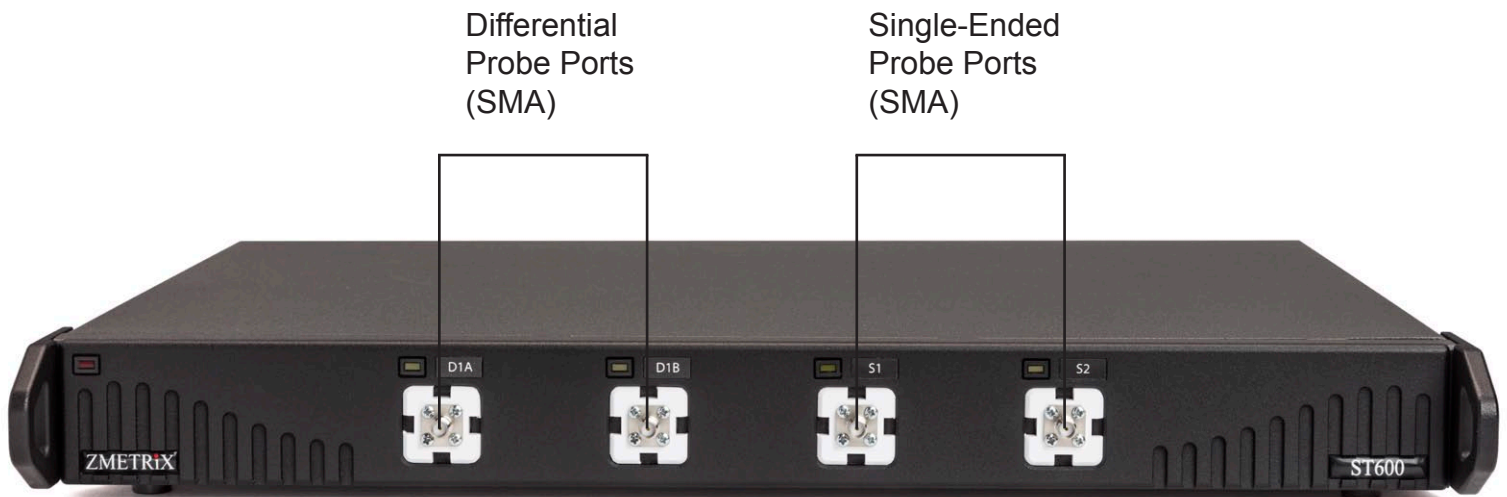
The Zmetrix ST600 Impedance Test System ...

Based on the scanning TDR technology of the ST300, the ST600 adds an additional channel for alternate probe pin configurations, as well as improvements in measurement range, and calibration stability. The ST line of TDR's just keeps getting better!

The Zmetrix ST600 Impedance test system brings additional hardware and software features to the PCB test market. The ST600 has a 1% measurement accuracy, calibrated to 25, 50, 75 and 100 ohm reference airlines traceable to national standards.

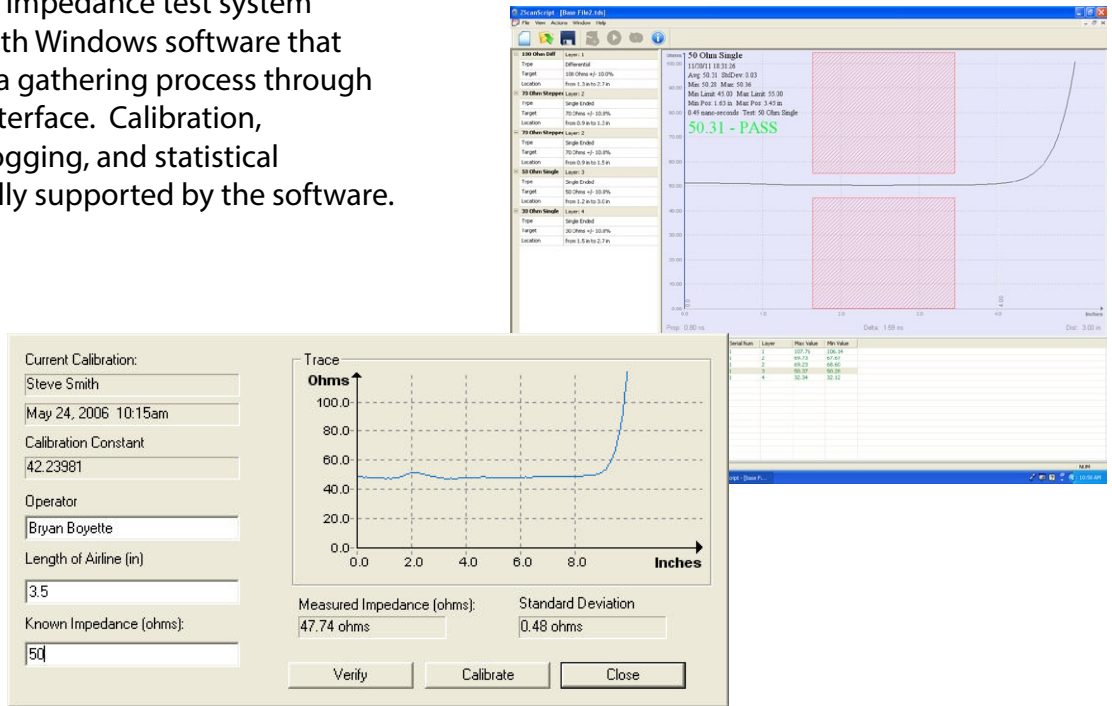
Simple and easy to use right out of the box

Simply plug the cables in, and start the software. The user interface will guide you through taking a single measurement, or gathering data on a batch of coupons. The ST600 makes it easy from start to finish. Anyone can take good measurements, from your newest operator to your most experienced technician.



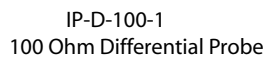
ST600 Measurement Software

The Zmetrix ST600 impedance test system comes standard with Windows software that automates the data gathering process through an intuitive user interface. Calibration, verification, data logging, and statistical reporting are all fully supported by the software.



Standard Accessories

The Zmetrix ST600 ships with all the accessories you will need to begin taking production measurements. From foot pedal to semi-rigid standards, the accessories you need are included in the purchase price.



Specifications

Bandwidth	7 GHz
Pulse Rise Time	75 picoseconds
Channels	1 Differential, 2 Single, SMA
Range	10 - 200 Ohms
Accuracy	1% across the range
Impedance Resolution	0.03 Ohms
Lineal Resolution	75 points/inch (.013")
Calibration	25, 50, 75, and 100 Ohm Airlines Traceable to national standards

Inputs

USB 2.0 peripheral port
Test probe channels – 4 (SMA)
Anti-static wrist strap cord connection – 4mm

Standard Accessories

50 ohm probe	IP-S-50-1
100 ohm differential probe	IP-D-100-1
50 ohm semi-rigid standard	ACCST-211
SMA Cable - 3 ft. (qty -3)	CBL100
USB Peripheral Cable - 3 ft.	CBL101
USB Footswitch	ACCST-300
Anti-static wrist strap & cable	ACCST-301
SMA Torque Wrench	ACCST-311

Optional Accessories

25 ohm semi-rigid standard	ACCST-200
75 ohm semi-rigid standard	ACCST-221
100 ohm semi-rigid standard	ACCST-231