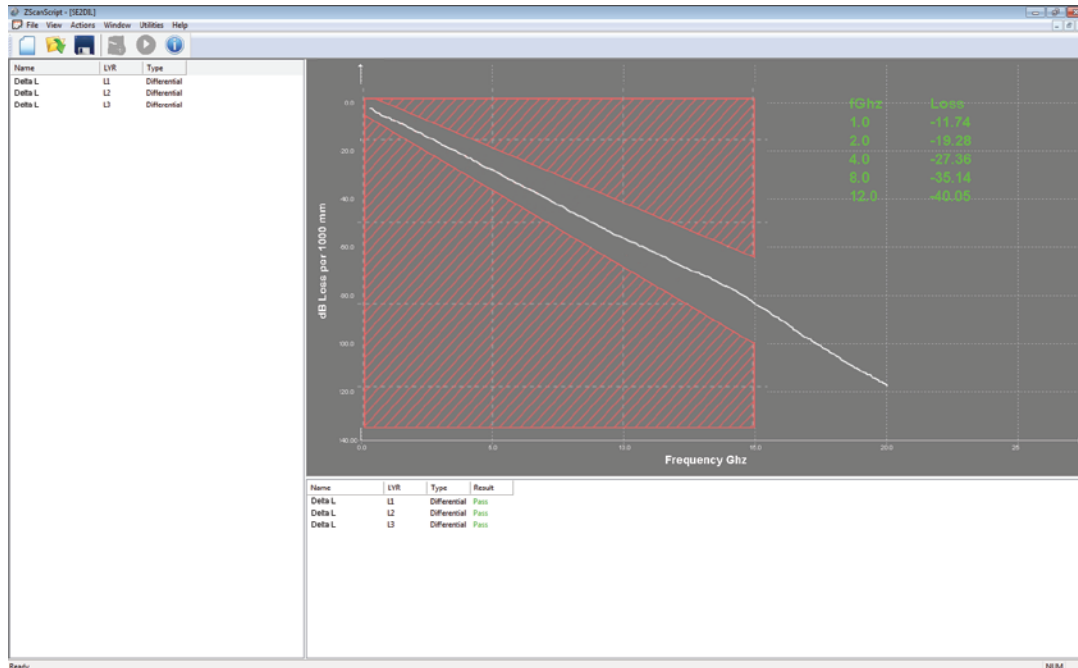


# Insertion Loss Testing with the Zmetrix SL100

Now PCB fabricators can measure transmission line insertion loss using Zmetrix' new VNA based insertion loss test system.



The Zmetrix SL100 uses VNA technology to make precision 4 port single-ended, mixed mode, or differential loss measurements up to 20 GHz. The SL100 is an easy-to-use production measurement tool that gives PCB fabrication shops what they need to make high frequency 2 or 4 port insertion loss measurements that are compliant with DELTA-L 4.0, and IPS test method 2.5.5.14. The SL100 comes complete with all probes, cables, calibration accessories, and software needed to begin production insertion loss testing.



For more information, contact your regional authorized Zmetrix distributor